



ER Addition was built in 2003-2005 as work went on in the original ...



One problem for Gene –excavation for the Addition footprint was where ALL phone and data lines (including GB’s link to internet) came into a communications room UNDER the old Lobby



Every phone line was severed every data fiber pulled back ...



... and access to NRAO's communications gear could be difficult



..... even for someone as enterprising as Gene!



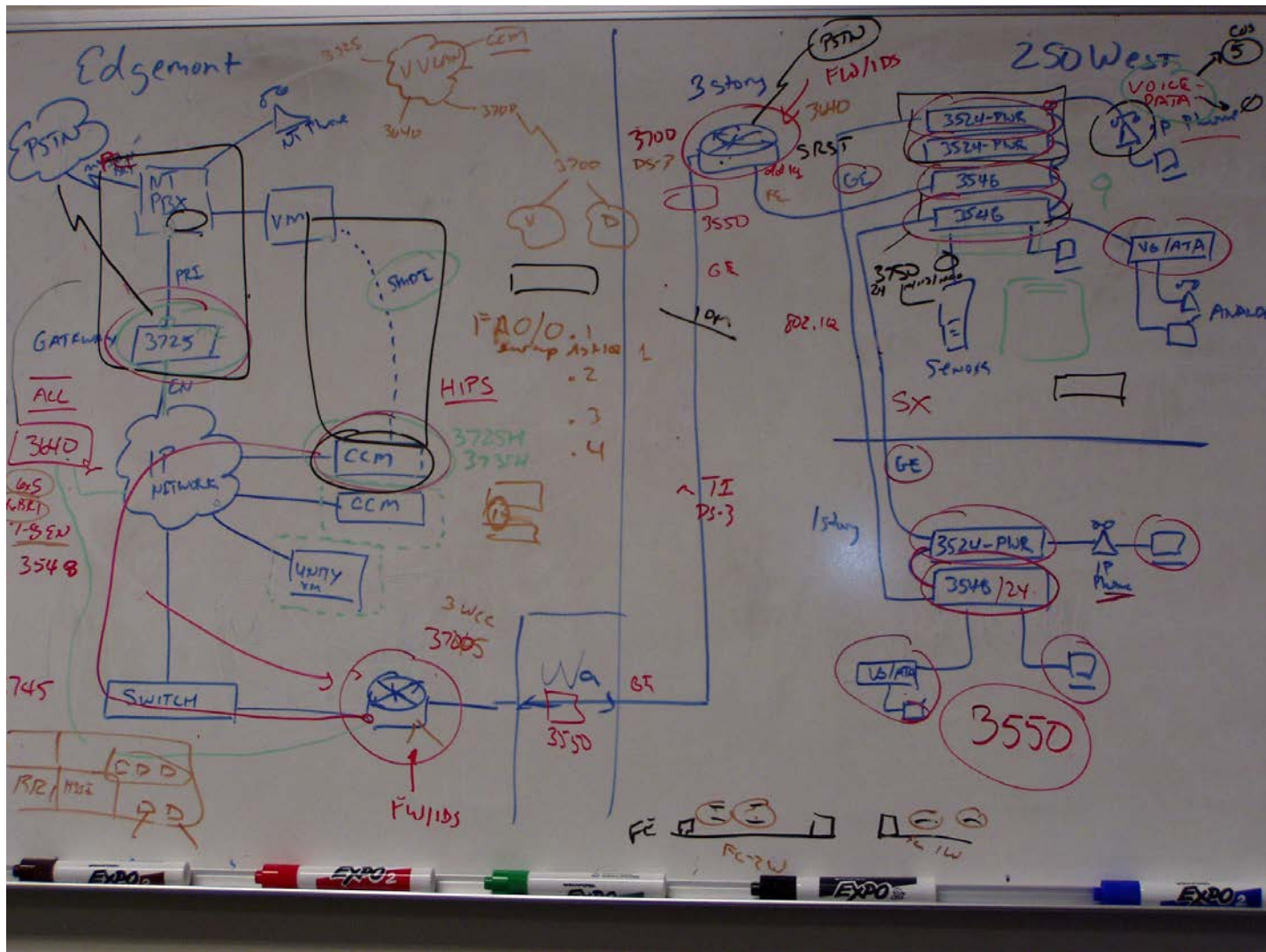
The internet fiber was rerouted over the Library to keep it (mostly) out of the way of construction for 18+ months.



CV and GB's data lifeline during the ER construction – kept away from bulldozers and jackhammers.



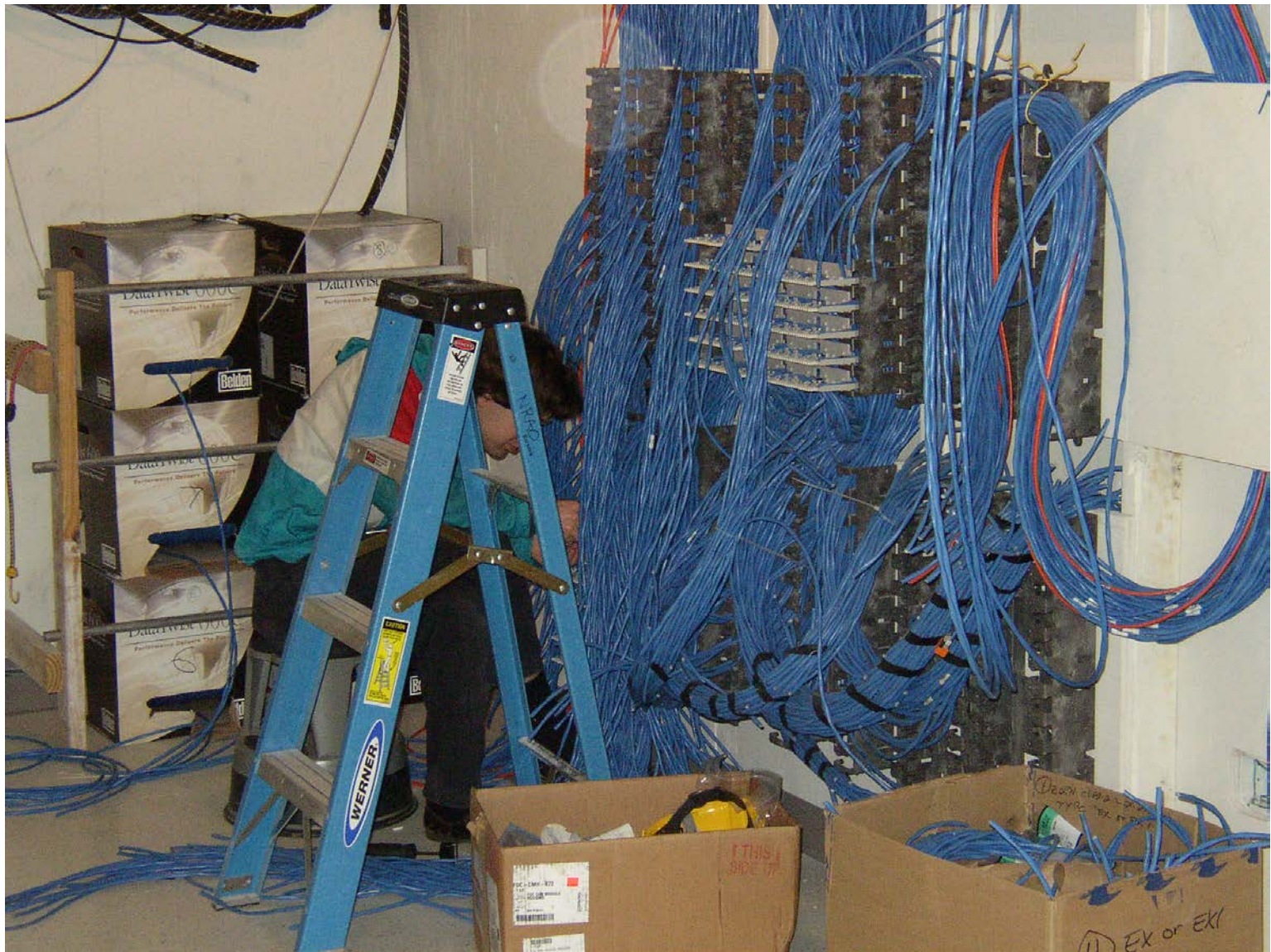
Gene problem-solved throughout the whole construction project ... nobody knows this building like he does!



In the middle of construction at Edgemont Road, NRAO moves the CDL to 250W. Gene expands the network to NTC ...



... and wires the new network at Edgemont Road in Fall of 2004



Gene and Dale planned and installed the new ER network while the contractors finished the Addition around them



Gene played a BIG role in planning the expanded building, as well as keeping us going in the old part throughout the construction.