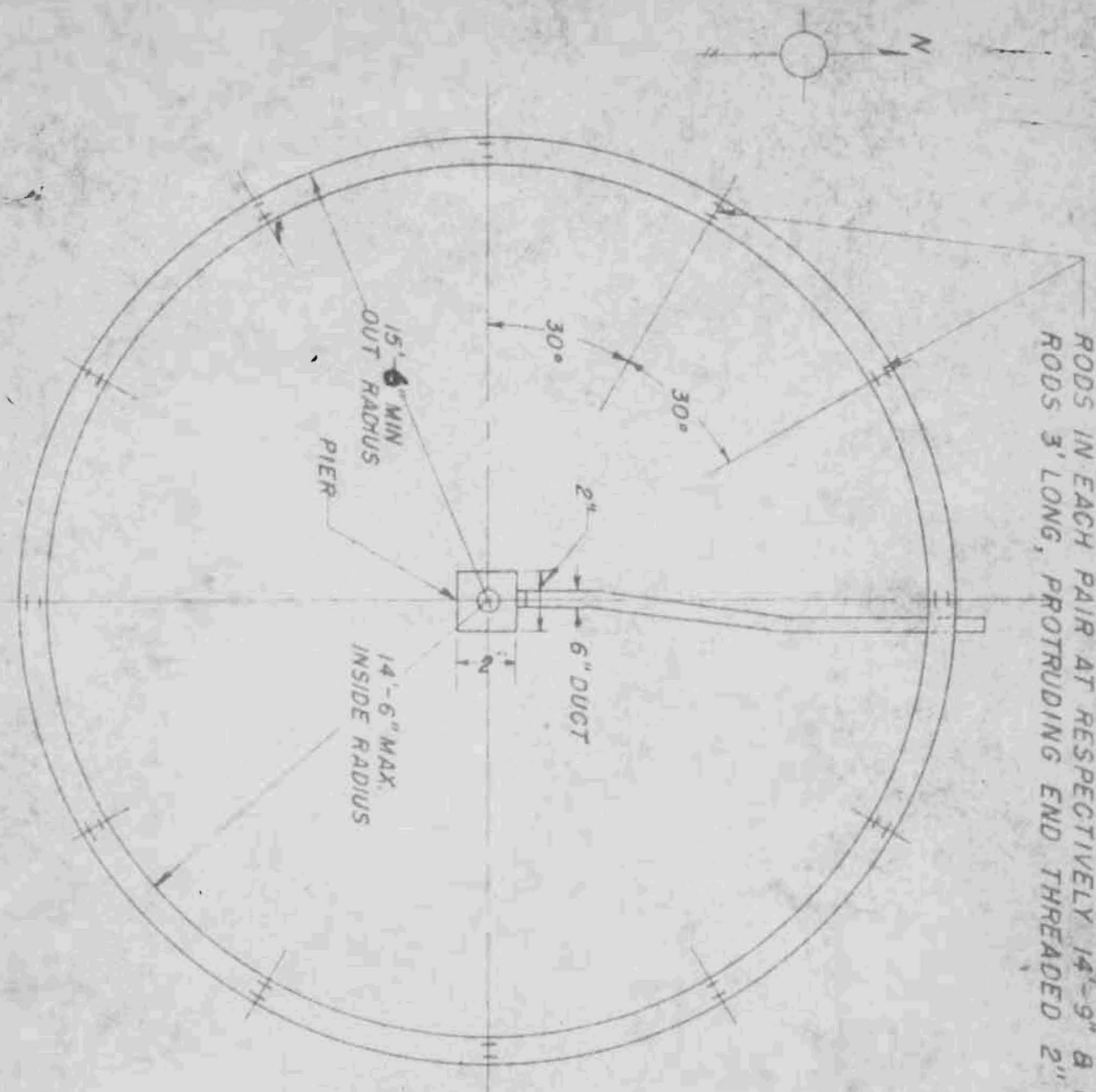
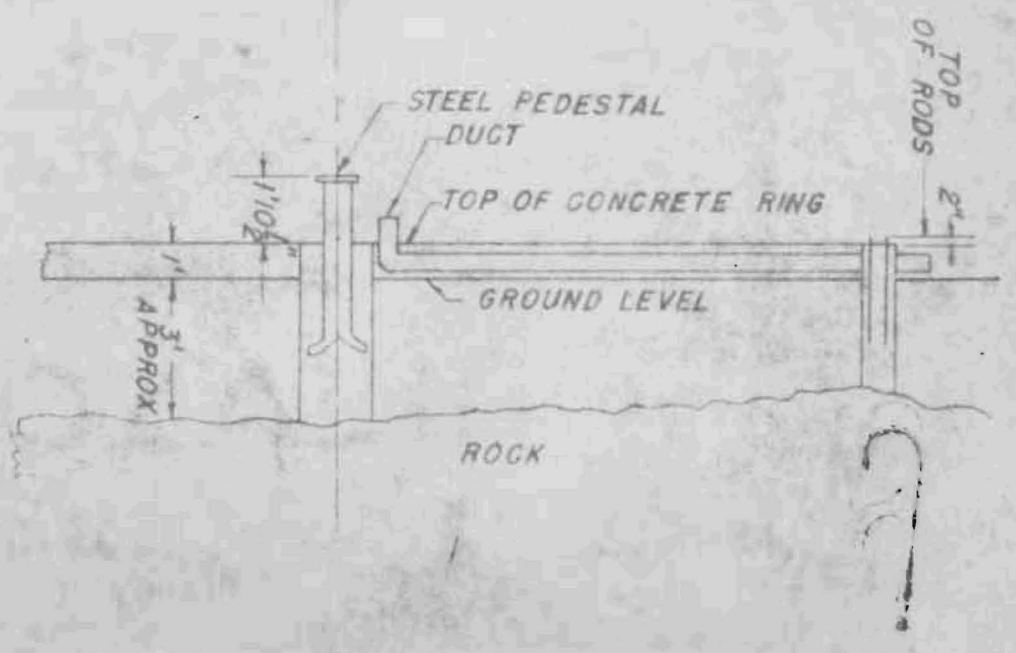


NOTE - 1. TOP OF RING TO BE FLAT & LEVEL WITH TOP OF PIER $\pm 1/4"$
 2. IF NO CIRCULAR FRAMES ARE AVAILABLE, RING MAY BE MADE IN FORM OF POLYGON USING STRAIGHT SIDES.



TWELVE PAIRS OF DEFORMED ROUNDS EQUALLY SPACED 30° RODS IN EACH PAIR AT RESPECTIVELY 14'-9" & 15'-3" RADIUS RODS 3' LONG, PROTRUDING END THREADED 2"



NATIONAL BUREAU OF STANDARDS WASHINGTON, D.C.	
CENTRAL RACID PROPAGATION LABORATORY	
SUBJECT	
TURNABLE FOUNDATION	
COSMIC NOISE MEASURING GEAR	
DESIGNER G.R.	DATE 5/47
DRAWN W.M.	SCALE 3/16" = 1'
CHECKER	SHEET NO. 1 OF 1
APPROVA	DRAWING 11D-A